

Integra Ci Range of Digital Metering Systems



Integra Ci1

DIN 96mm Watt & Var Hour Import/Export

Model type	System	Parameters	Price
CI1-01	1-phase, 3-phase 3-wire & 3-phase 4-wire	Input 100 - 289V L-N, 5A Auxiliary power 110 - 400V AC 120 - 350V DC	£75.00
Add code	Communication & output options (ordered separately)		Price
CI-MOD-01	Modbus RS485 comms module		£40.00
CI-PUL-01	Pulsed output module		£20.00



Integra Ci3

DIN 96mm Multifunction Meter

Model type	System	Parameters	Price
CI3-01	1-phase, 3-phase 3-wire & 3-phase 4-wire	Input 100 - 289V L-N, 5A Auxiliary power 110 - 400V AC 120 - 350V DC	£99.00
Add code	Communication & output options (ordered separately)		Price
CI-MOD-01	Modbus RS485 comms module		£40.00
CI-PUL-01	Pulsed output module		£20.00



Integra Ri3

DIN-rail 4 Module Multifunction Meter

Model type	System	Parameters	Price
RI3-01	1-phase, 3-phase 3-wire & 3-phase 4-wire	Input 100 - 289V L-N, 5A Auxiliary power 110 - 400V AC 120 - 350V DC Complete with Modbus and relay pulsed output	£120.00

Ex-stock delivery

Ebony Series Current Transformers



M3N1-25-

Moulded Case 3-phase Measuring Current Transformers

Case size: 75 x 60 x 80mm Aperture: 3 @ 15 X 25mm

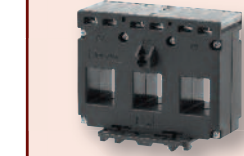
Model type	Primary current	VA at Ci 0.5	VA at Ci1	VA at Ci3	5A Price
M63N1-25-60/5	60/5	-	1	2	£27.25

Case size: 105 x 38 x 80mm Aperture: 3 @ 21 X 25mm

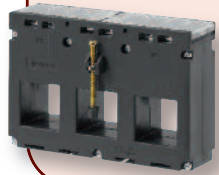
Model type	Primary current	VA at Ci 0.5	VA at Ci1	VA at Ci3	5A Price
M3N1-35-100/5	100/5	-	1.5	2	£23.95
M3N1-35-125/5	125/5	-	1.5	2.5	£23.95
M3N1-35-150/5	150/5	-	1.5	2.5	£23.95
M3N1-35-200/5	200/5	1.5	1.5	2.5	£23.95
M3N1-35-250/5	250/5	1.5	1.5	2.5	£23.95

Case size: 141 x 38 x 95mm Aperture: 3 @ 31 X 31mm

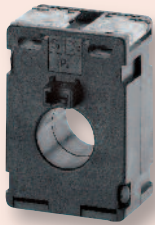
Model type	Primary current	VA at Ci 0.5	VA at Ci1	VA at Ci3	5A Price
M3N1-45-400/5	400/5	2.5	2.5	3.75	£31.00
M3N1-45-600/5	600/5	2.5	2.5	3.75	£31.00



M3N1-35-



M3N1-45-



M53Q Range

Moulded Case Measuring Current Transformers

Case size: 45 x 30 x 65mm Aperture: 21mm diameter

Model type	Primary current	VA at Ci 0.5	VA at Ci1	VA at Ci3	5A Price
M53Q-60/5	60	-	-	1.25	£6.75
M53Q-80/5	80	-	-	1.50	£6.75
M53Q-100/5	100	-	1.5	3	£6.75
M53Q-125/5	125	-	2.50	3	£6.75
M53Q-150/5	150	-	2.50	3.75	£6.75
M53Q-200/5	200	-	3.75	5	£6.75
M53Q-250/5	250	-	5	-	£6.75

Case size: 50 x 30 x 80mm

Aperture: 30 x 10, 25 x 15, 20 x 20mm and 25mm diameter

Model type	Primary current	VA at Ci 0.5	VA at Ci1	VA at Ci3	5A Price
M53J-200/5	200	-	2.5	2.5	£7.25
M53J-250/5	250	-	2.5	3.75	£7.25
M53J-300/5	300	-	3.75	5	£7.25

Case size: Case: 60 x 30 x 94mm Aperture: 40 x 10mm and 32mm diameter

Model type	Primary current	VA at Ci 0.5	VA at Ci1	VA at Ci3	5A Price
M63N-400/5	400	-	5	7.5	£8.75
M63N-600/5	600	5	7.5	10	£8.75



M53J Range



M63N Range

For full range of products please contact
sales@cca.eu.com



Errors and omissions excluded. TE Connectivity and TE connectivity (logo) are trademarks. CROMPTON is a trademark of Crompton Parkinson Limited and is used under licence. Other trademarks are property of their respective owners.

Control Components Anglia Ltd:

Unit 60 & 62 Hellesdon
Park Road
Drayton High Road
Norwich
Norfolk
NR6 5DR
Tel: 01603 424140
Fax: 01603 424142

Unit 3
Fairweather Court
Peterborough
Cambridgeshire
PE1 5UN
Tel: 01733 554863
Fax: 01733 554990

Unit A1 Harlow Business Centre
Pinnacles East
Harlow
Essex
CM19 5AF
Tel: 01279 639603
Fax: 01279 626783

sales@cca.eu.com www.cca.eu.com

